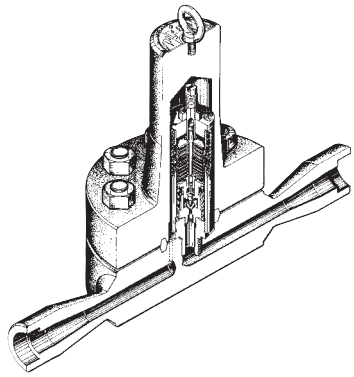
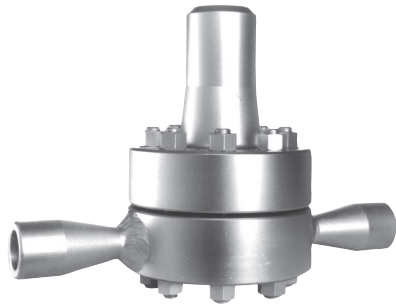


# TBH71 · TBH72 · TBH81 · TBH82 型



TBH71

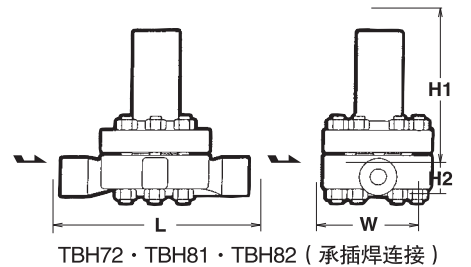
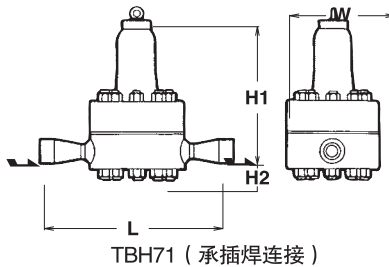
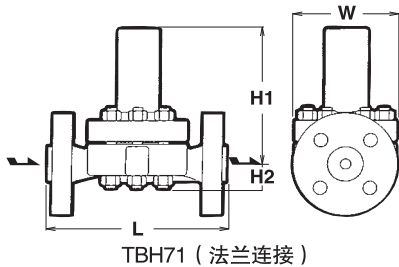
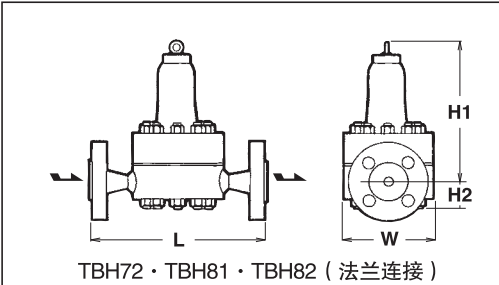


TBH72 · TBH81 · TBH82

对应法兰标准规格

型 号	法 兰 规 格
TBH71-80F	ASME·JPI 600~1500 lb RF·RJ JIS 30~63K RF 等
TBH71-105F	
TBH72-80F	
TBH72-105F	
TBH81-150F	ASME·JPI 1500·2500 lb RF·RJ 等
TBH81-200F	
TBH82-150F	
TBH82-200F	

外形尺寸/规格一览



型 号	连 接		工作 压力 范围 (MPa)	最高 使用 温度 (°C)	调整 温度 范围 (°C)	标准 设定 温度	阀 体 材 质	尺 寸 (mm)				重 量 (kg)
	方 式	口 径 (A)						L	H1	H2	W	
TBH71-80F	法兰	15	1.0~8.0	470	100~260	210°C (6.5MPa时)	铸 钢 (WC6)	260	195	33	140	16
		20										17
		25										19
TBH71-80W	承插焊	15·20·25	1.0~10.5	470	100~280	230°C (8.0MPa时)	铸 钢 (WC6)	250	195	33	140	19
		20										16
		25										17
TBH71-105F	法兰	15	2.0~15	470	100~300	250°C (10.5MPa时)	铬 锰 合 金 (A182 F22)	400	268	50	180	38
		20										29
		25										38
TBH71-105W	承插焊	15·20·25	2.0~20	470	100~320	270°C (15.0MPa时)	铬 锰 合 金 (A182 F22)	400	268	50	180	29
TBH81-150F	法兰	15~25	2.0~15	550	100~260	210°C (6.5MPa时)	铬 锰 合 金 (A182 F22)	400	268	50	180	35
TBH81-150W	承插焊											29
TBH81-200F	法兰											38
TBH81-200W	承插焊	29										
TBH72-80F	法兰	15~25	1.0~8.0	550	100~280	230°C (8.0MPa时)	铬 锰 合 金 (A182 F22)	400	268	50	180	35
TBH72-80W	承插焊											29
TBH72-105F	法兰											35
TBH72-105W	承插焊	29										
TBH82-150F	法兰	15~25	2.0~15	550	100~300	250°C (10.5MPa时)	铬 锰 合 金 (A182 F22)	400	282	60	190	46
TBH82-150W	承插焊											37
TBH82-200F	法兰											76
TBH82-200W	承插焊	68										

◆标准设定温度是指：出厂标准设定温度

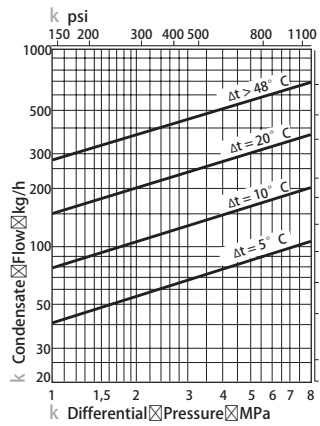
◆对应日标、美标、德标、国标等各规格承插焊及法兰

※压力换算：1MPa=10.197kgf/cm<sup>2</sup>

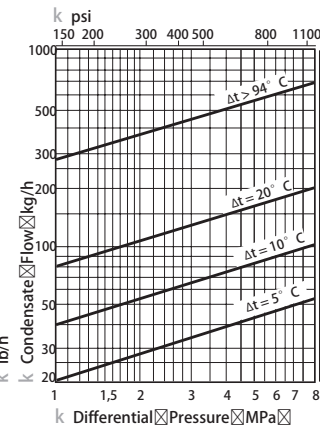
Capacity Charts

Temperature Stroke Charts

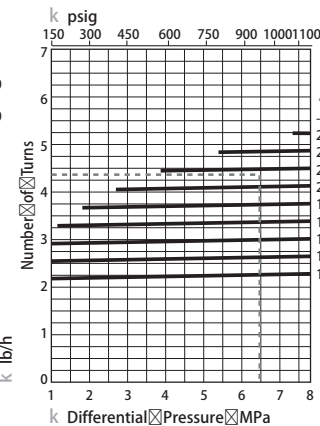
TBH71 - 80



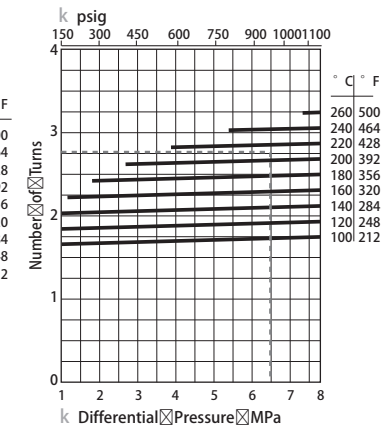
TBH72 - 80



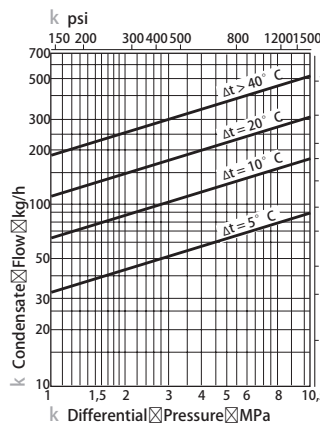
TBH71 - 80



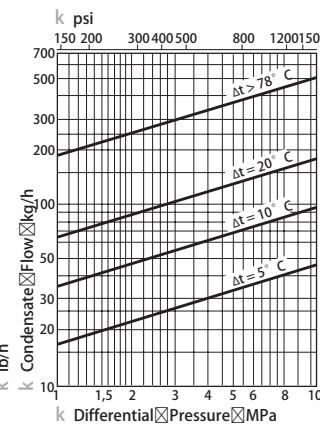
TBH72 - 80



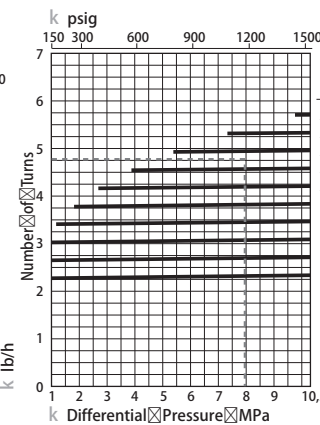
TBH71 - 105



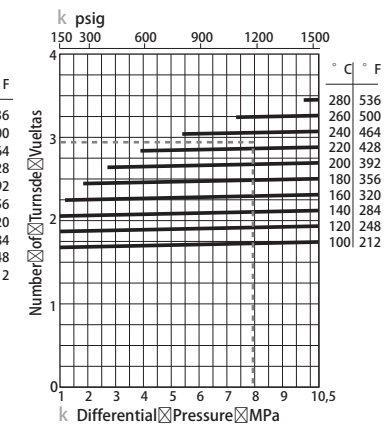
TBH72 - 105



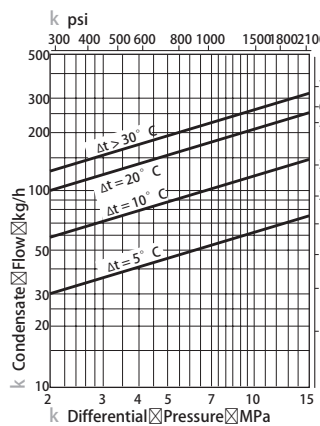
TBH71 - 105



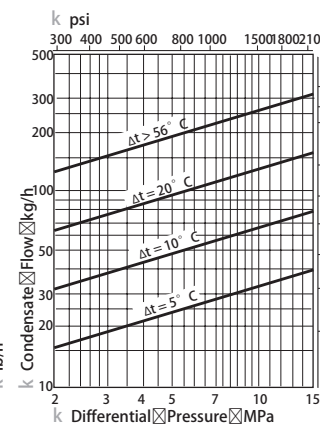
TBH72 - 105



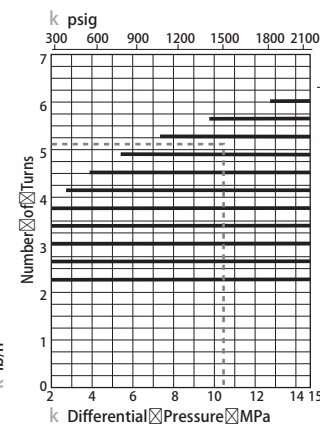
TBH81 - 150



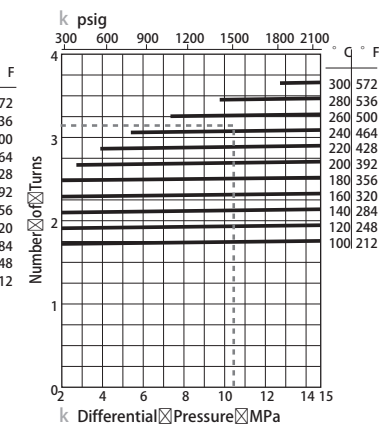
TBH82 - 150



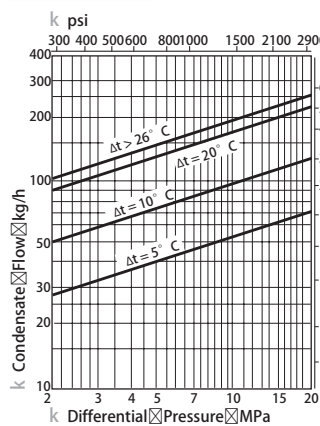
TBH81 - 150



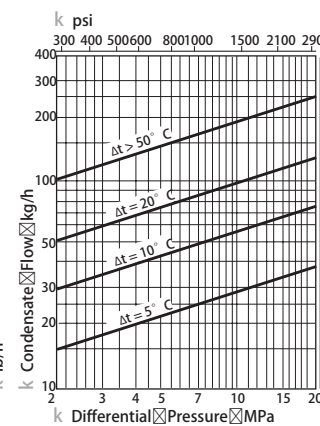
TBH82 - 150



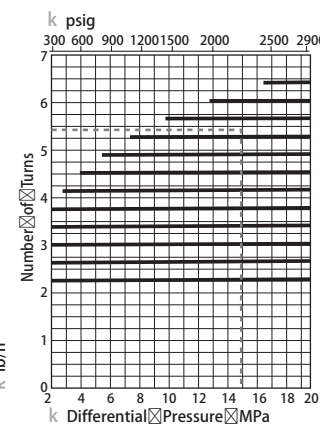
TBH81 - 200



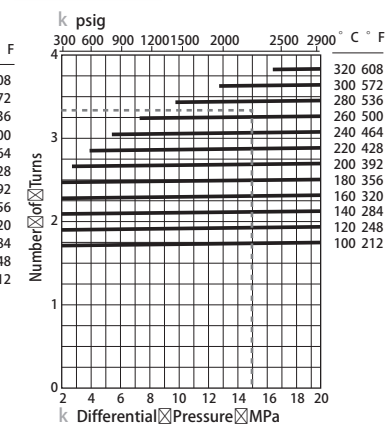
TBH82 - 200



TBH81 - 200

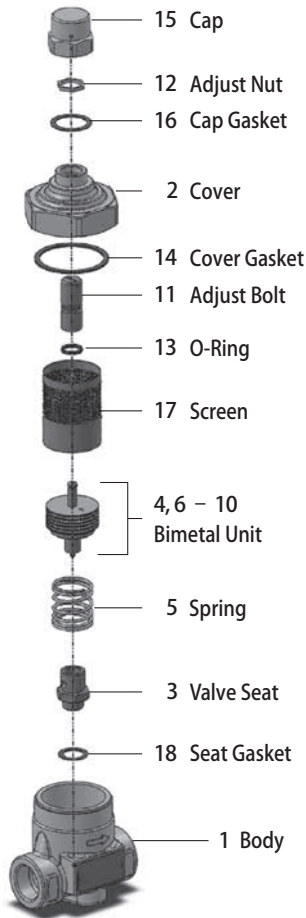


TBH82 - 200

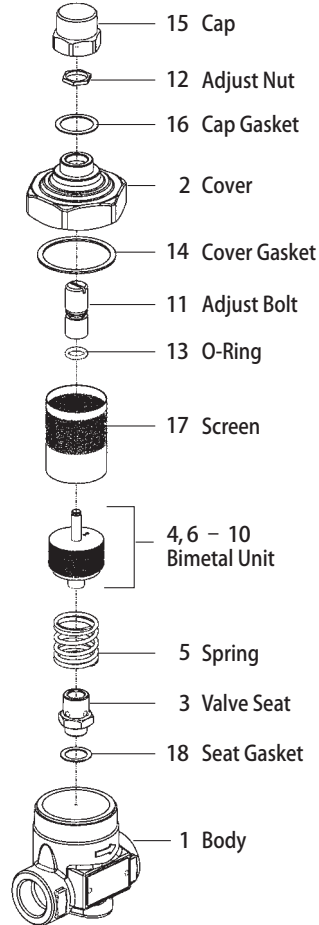


The dashed line shows the standard factory setting.

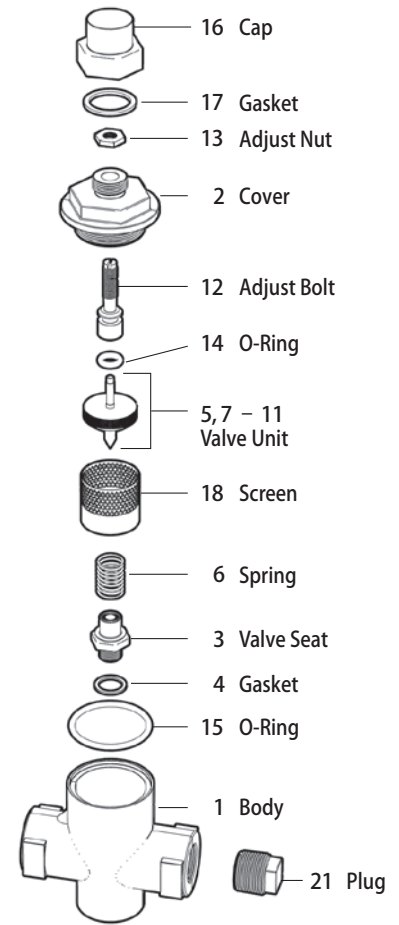
**TB7N**



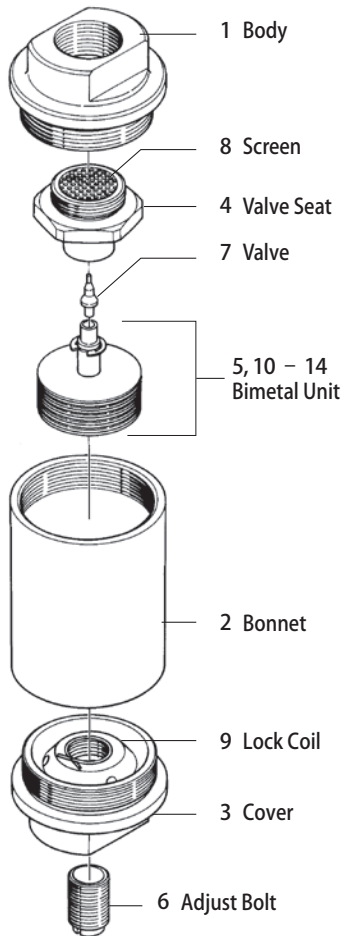
**TB9N**



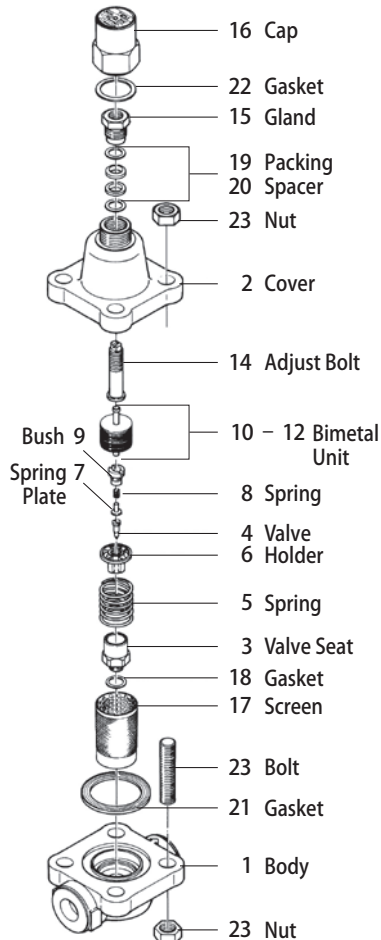
**TBC2, TBC2B**



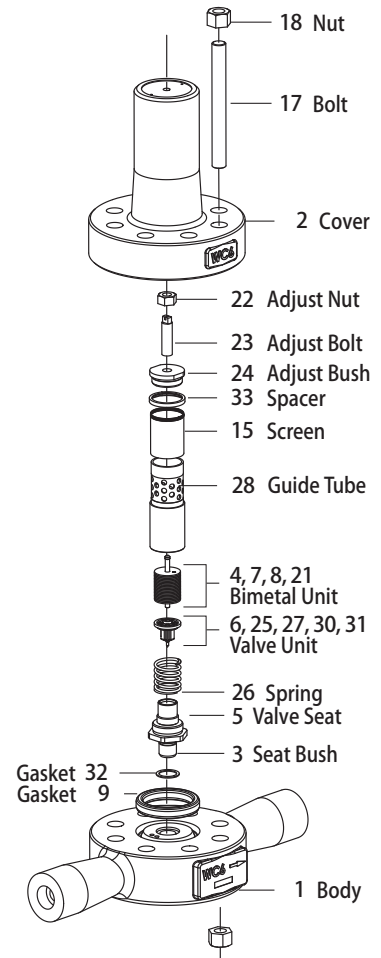
**TB1N**



**TB51, TB52**



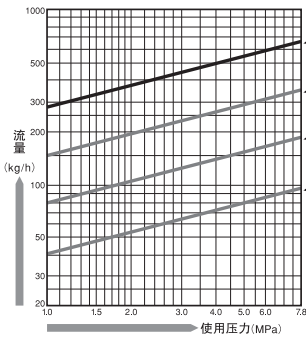
**TBH71, TBH72, TBH81, TBH82**



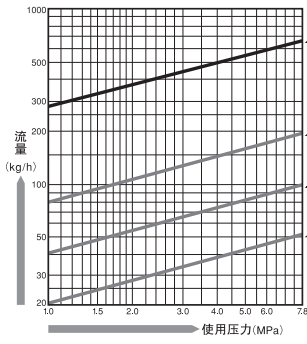
# TBH71 · TBH72 · TBH81 · TBH82 型

## 流量图

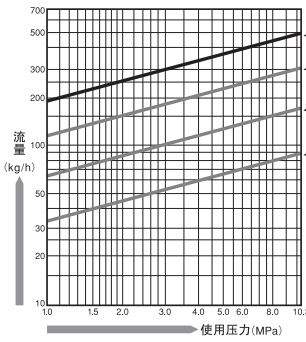
**TBH71-80**



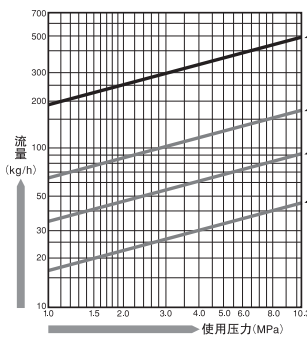
**TBH72-80**



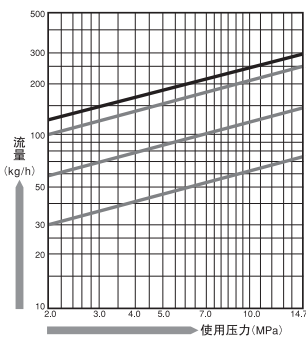
**TBH71-105**



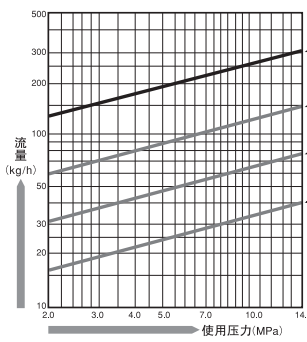
**TBH72-105**



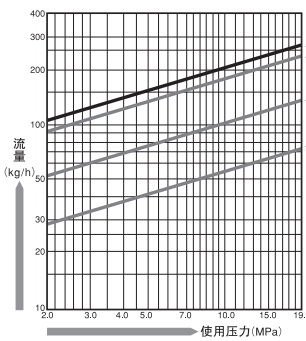
**TBH81-150**



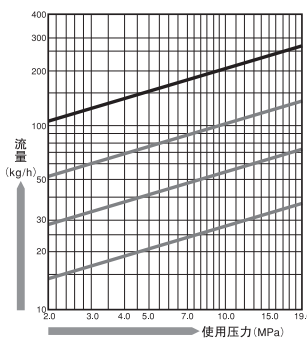
**TBH82-150**



**TBH81-200**

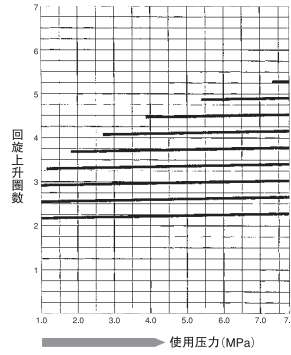


**TBH82-200**

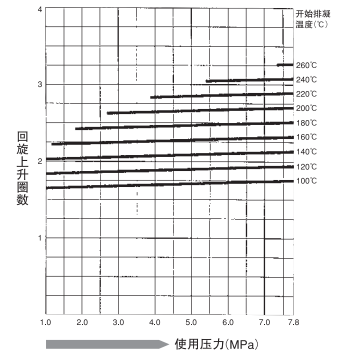


## 排凝温度设定表

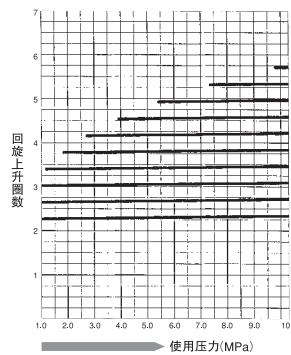
**TBH71-80**



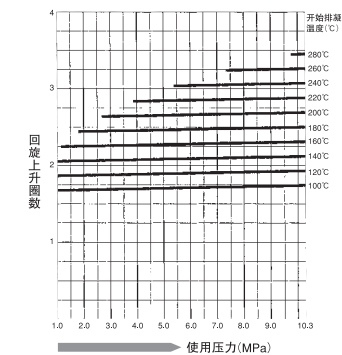
**TBH72-80**



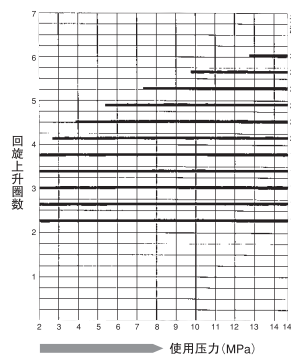
**TBH71-105**



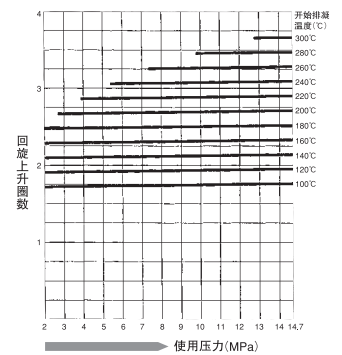
**TBH72-105**



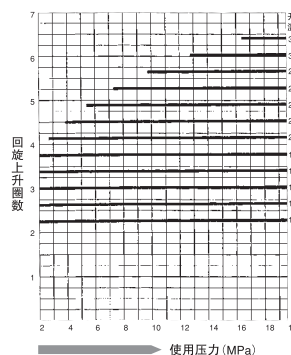
**TBH81-150**



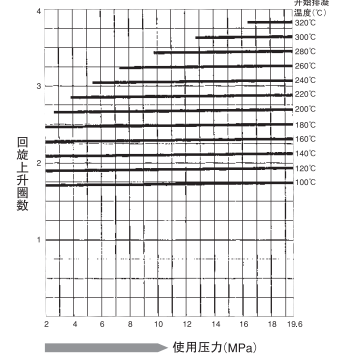
**TBH82-150**



**TBH81-200**



**TBH82-200**



$\Delta t$ 是指：调温型疏水阀的开始排凝温度与冷凝水温度的差。温度差 ( $\Delta t$ ) 越大冷凝排出量越大。